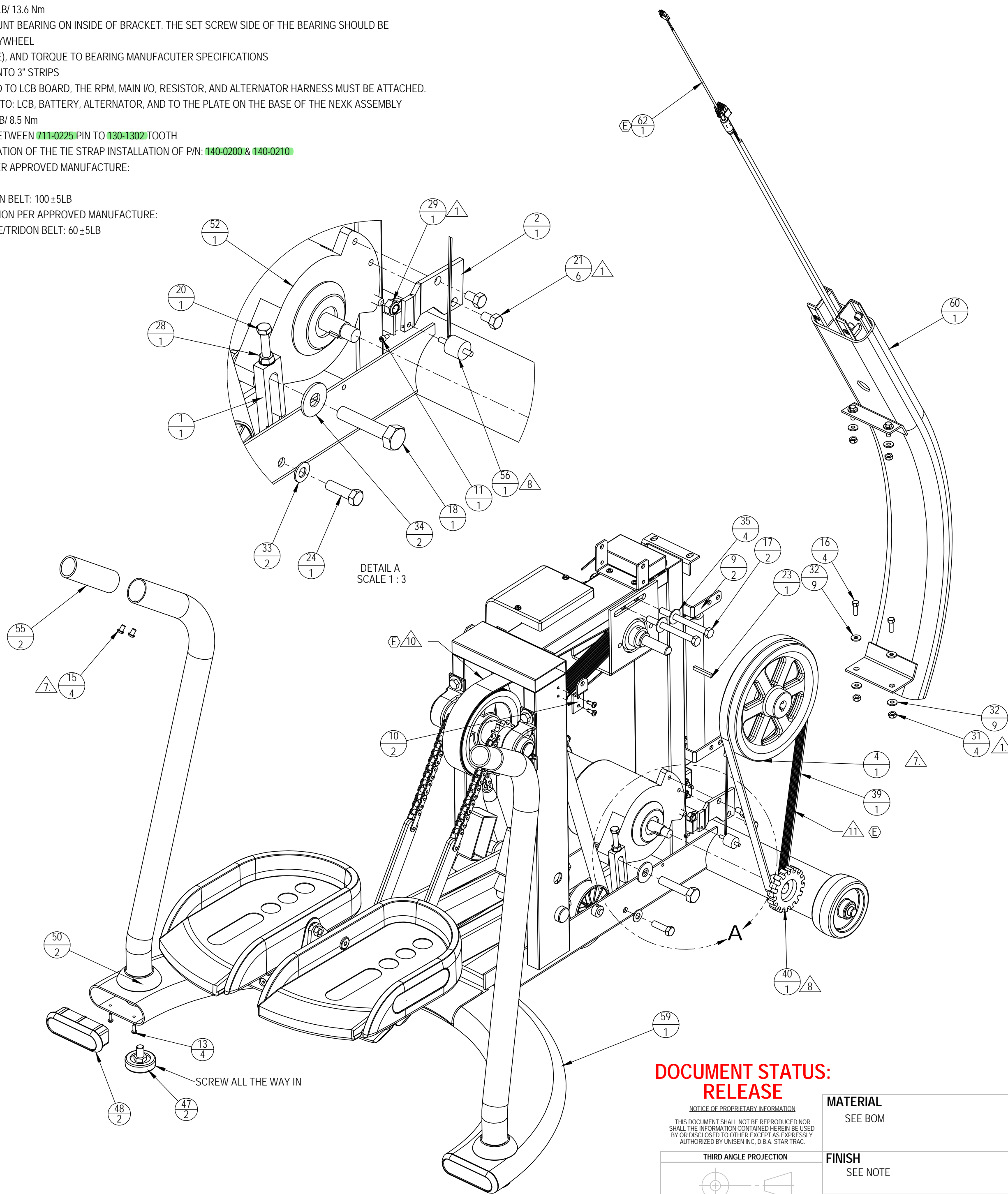


NOTES: (E)

1. TORQUE TO 120 IN-LB/ 10 FT-LB/ 13.6 Nm
2. ON THE FLYWHEEL SIDE, MOUNT BEARING ON INSIDE OF BRACKET. THE SET SCREW SIDE OF THE BEARING SHOULD BE DIRECTED TOWARDS THE FLYWHEEL
3. APPLY LOCTITE 222 (PURPLE), AND TORQUE TO BEARING MANUFACUTER SPECIFICATIONS
4. CUT P/N: 140-0490 & 140-492 INTO 3" STRIPS
5. BEFORE COVER IS ATTACHED TO LCB BOARD, THE RPM, MAIN I/O, RESISTOR, AND ALTERNATOR HARNESS MUST BE ATTACHED.
6. CABLE HARNESS CONNECTS TO: LCB, BATTERY, ALTERNATOR, AND TO THE PLATE ON THE BASE OF THE NEXK ASSEMBLY
7. TORQUE TO 75 IN-LB. 6.3 FT-LB/ 8.5 Nm
8. ADJUST A GAP OF 0.020" IN BETWEEN 711-0225 PIN TO 130-1302 TOOTH
9. DIAGRAM 1 SHOWS THE LOCATION OF THE TIE STRAP INSTALLATION OF P/N: 140-0200 & 140-0210
10. MAIN DRIVE (J16) TENSION PER APPROVED MANUFACTURE:
 - a. BANDO BELT: 125 ±5LB
 - b. JASON/MEGADYNE/TRIDON BELT: 100 ±5LB
11. ALTERNATOR BELT (J7) TENSION PER APPROVED MANUFACTURE:
 - a. BANDO/JASON/MEGADYNE/TRIDON BELT: 60 ±5LB

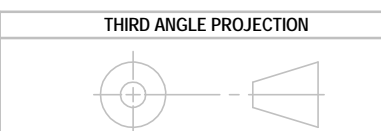


REVISIONS				
REV.	DATE	DESCRIPTION	ECO	BY
A	3/13/07	PRODUCTION RELEASE	11539	DN
B	5/16/07	REPLACED 140-3347 FOR 140-3347-05 (NEW PAINT)	11619	DN
C	3/5/08	ADD P/N: 140-0200, CHANGE P/N: 140-0210 QTY IS 4, WAS: 2 ADD WIRING TIE STRAP DETAIL SHEET 2 OF 2	11811	RKL
D	04-29-09	UPDATE PRINT AND NOTES TO CURRENT INFORMATION: CHG BOM QTY FOR P/N: 140-0490 & 140-0492 TO LINEAR FEET; ADD 110-0285 QTY 4	12089	SCN
E	10-21-09	REMOVE 711-3166 (1); ADD 711-3228 (1), 711-3229 (1), 440-0278 (1); ADD NOTES #10 & #1, CHG QTY OF 110-3026 IS18, WAS 16	12301	SCN

ITEM NO.	PART NUMBER	DESCRIPTION	Default/QTY.
1	020-0021	BRACKET, ALTERNATOR ADJUST	1
2	020-0023	BRACKET, RPM SENSOR/ALTERNATOR	1
3	020-0141	SHAFT/PULLEY,16J130 STP	1
4	020-0681	FLYWHEEL, 8.0" OD X .625" ID	1
5	020-0690	BRACKET, ADJUSTABLE	1
6	020-4604	SPACER, 1/2 ID X 3/4 OD X .31 L	2
7	020-6748	COVER, LCB GUARD, STEPPER	1
8	020-6831	BRACKET, SHROUD MOUNT, STEP	1
9	020-6858	BRACKET, SHROUD, STEP-2	2
10	020-6859	BRACKET, SHROUD, STEP-3	2
11	110-0132	SCREW, #6-32x1/4,SHC,HK,AS,NP	1
12	110-0280	SCREW, #6-32x7/8,PHM,SL,CS,ZI	2
13	110-0285	SCREW, #8-18x1/2,PHT-AB,PH,SS	4
14	110-0501	SCREW, 1/4-20x3.25,HHC,CS,ZP	1
15	110-0506	SCREW, 1/4-28x3/8,BHC,HK,SS,BO	4
16	110-0570	SCREW, 1/4-20x3/4,HHC,HE,CS,ZP	4
17	110-0601	SCREW, 3/8-16x4.0,SHC,HE,CS,ZP	2
18	110-0610	BOLT, 1/2-13x2.5,HHC,HE,CS,ZI	1
19	110-0652	BOLT, 5/16-18x4.0,HHC,HE,CS,ZP	1
20	110-0686	BOLT, 5/16-18 X 2.0" HHCS FULLTHREAD	1
21	110-0687	SCREW, 5/16-18x1/2,HHC,HE,CS,Z	6
22	110-1415	CAP, 1/2 PUSH ON	2
23	110-1442	KEY,MACHINE 3/16X3/16X1.5"	1
24	110-1530	SCREW, 3/8-16x1.25,HHC,HE,CS,Z	2
25	110-1740	NUT, 6-32, KEP	1
26	110-1830	NUT, 3/8-16, NYLOK HEX	3
27	110-1833	NUT, 1/2-13, NYLOK HEX	1
28	110-1870	NUT, 5/16-18 KEPS	1
29	110-1871	NUT, NYLON INSERT	1
30	110-3026	SCREW, 10-24X.50" PPHTCS	18
31	110-3098	NUT, 1/4-20, HEX, NYLOC	4
32	120-0410	WASHER, 1/4, SAE FLAT	9
33	120-0460	WASHER, 3/8, SAE FLAT	2
34	120-0462	WASHER, 1/2"FLAT 9/16ID 1-3/8OD	2
35	120-0463	WASHER, 3/8 X 1 OD	4
36	120-0480	WASHER, 5/16 ID, 7/8 OD, .087 THK	1
37	120-0495	WASHER, 5/16, SPLIT LOCK	4
38	120-0800	SPACER, #6, 1/4"ODx1/2" L, NY	2
39	130-0123	BELT, 450J7 POLY VEE	1
40	130-1302	DRIVE PULLEY,7J130 STEPPER	1
41	130-1694	WHEEL, 4.0" OD X 0.5" BORE	2
42	130-7008	FLANGE BEARING ASSY, 1"	2
43	140-0200	TIE STRAP, 5"	2
44	140-0210	TIE STRAP, 3.5"	4
45	140-0490	TAPE, VELCRO HOOKS	.5-FT
46	140-0492	TAPE, VELCRO LOOPS	.5-FT
47	140-3247	LEVELER, FEET ADJUSTMENT	2
48	140-3310	END CAP, STEP, BASE	2
49	140-3325	TIE MT, 2-WAY EXT, .18" TIE	2
50	140-3347-05	BOOT, HANDRAIL, STEPPER	2
51	170-0688	BRACKET, RESISTOR	4
52	260-0182	ALTERNATOR, MONDO	1
53	440-0278	FILTER, NOISE, STEPPER	1
54	580-0275	BATTERY, 6V NP	1
55	710-0521	INSERT, SIDERAIL, UNIVERSAL	2
56	711-0225	RPM SENSOR COIL ASSY,STEPPER	1
57	711-3162	ASSY, LCB, STEPPER	1
58	711-3167	CABLE, RESISTOR, STEPPER	1
59	711-3193	KIT, STEP, FRAME, 5100	1
60	711-3199	ASSY, BASE NECK, STEPPER	1
61	711-3228	CABLE, EMI, ALT AND LCB, VLAD, STEP	1
62	711-3229	CABLE, EMI, POWER, VLAD, STEP	1
63	715-3430	AXLE, ELEVATION, PRO TR	1

**DOCUMENT STATUS:
RELEASE**

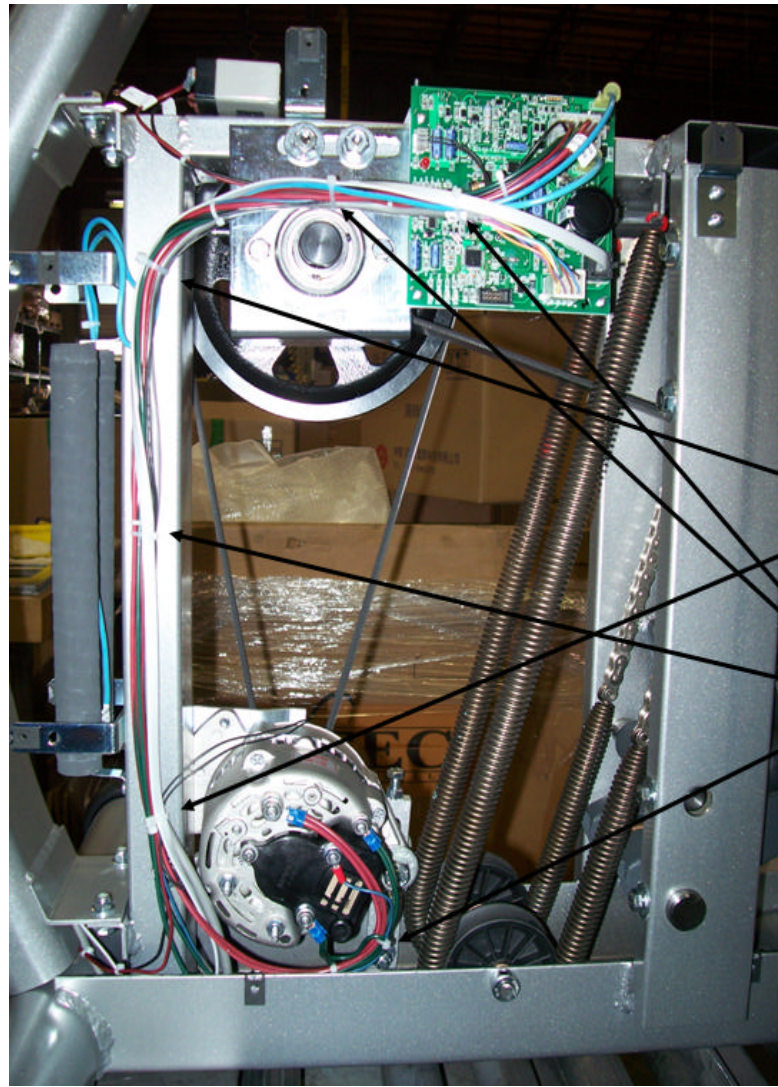
NOTICE OF PROPRIETARY INFORMATION
THIS DOCUMENT SHALL NOT BE REPRODUCED NOR SHALL THE INFORMATION CONTAINED HEREIN BE USED BY OR DISCLOSED TO OTHER EXCEPT AS EXPRESSLY AUTHORIZED BY UNISEN INC. D.B.A. STAR TRAC.



MATERIAL SEE BOM	FINISH SEE NOTE	VENDOR:	P/N:
----------------------------	---------------------------	----------------	-------------

UNLESS OTHERWISE SPECIFIED DIMENSIONS ARE IN INCHES. TOLERANCES ARE:	
DECIMALS X = ±.13 XX = ±.05 XXX = ±.03 X.XXX = ±.010	ANGLES ±2°
DRAWN DNGO	DATE 05-11-07
CHECKED	
APPROVED	

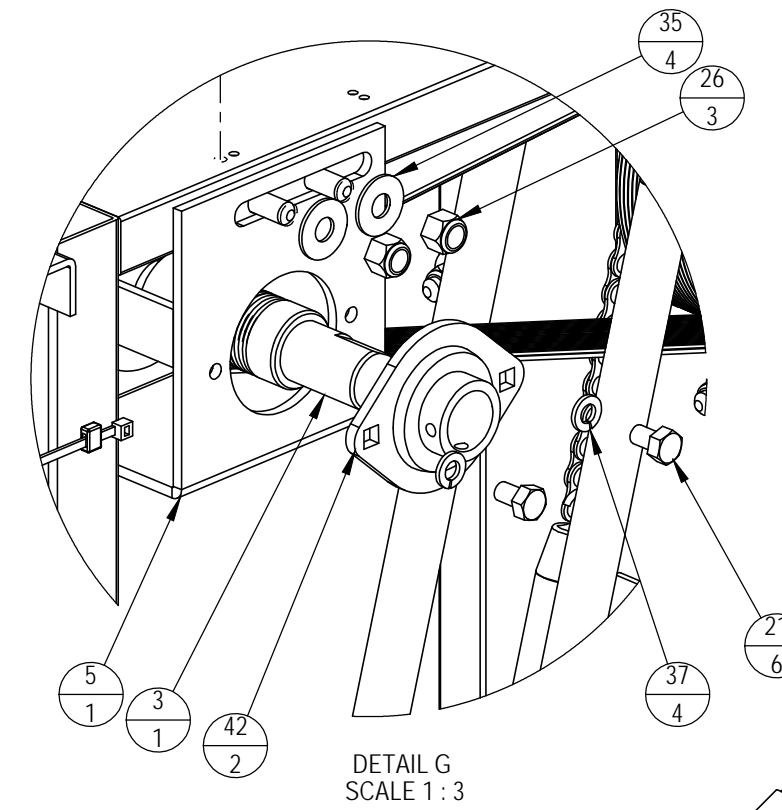
UNISEN, INC. DBA		14410 Myford Road Irvine CA 92606	
STAR TRAC		STARTRAC PART NO	
711-3192		REV	
E		TITLE	
ASSY, STEP, BASE, DRIVE		SCALE: 1:5	
SHEET 1 OF 2		SHEET SIZE: C	



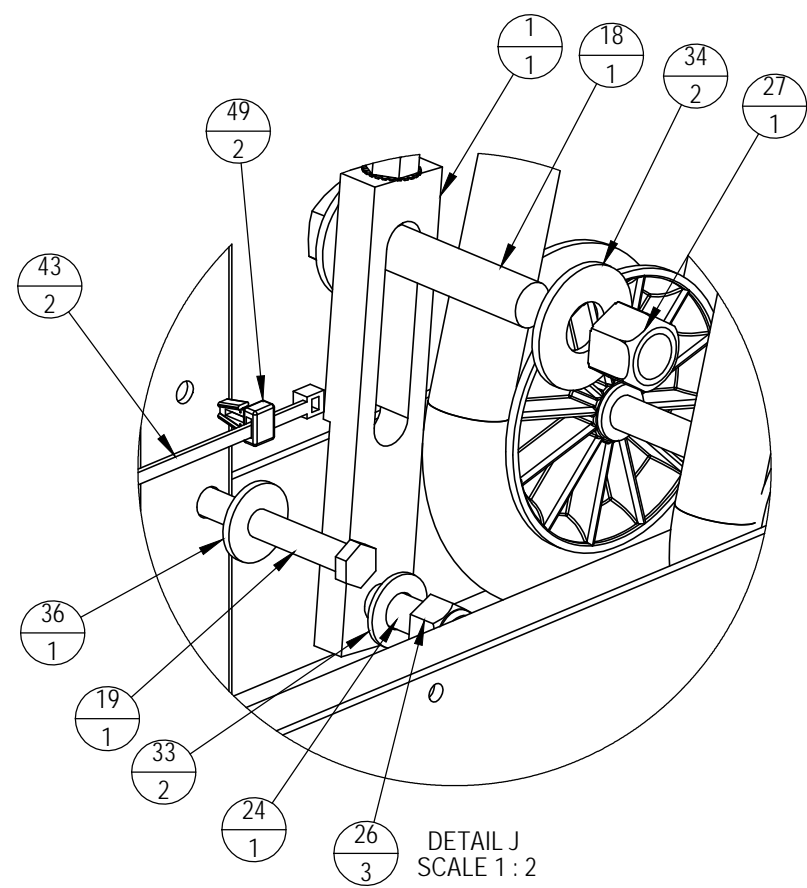
9. DIAGRAM 1

140-0200

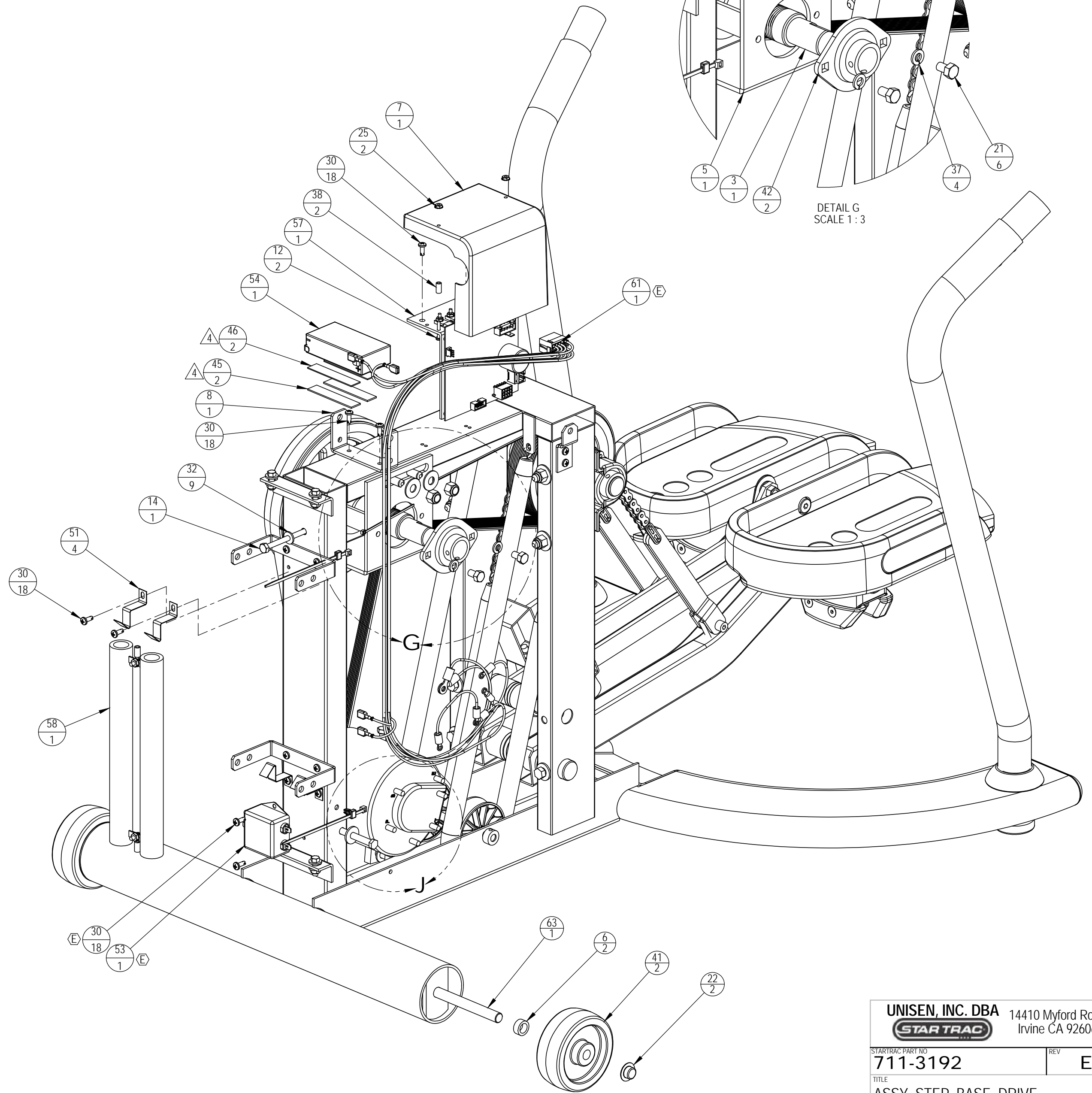
140-0210



DETAIL G
SCALE 1:3



DETAIL J
SCALE 1:2



NOTES: SEE SHEET 1

UNISEN, INC. DBA		14410 Myford Road	
STARTRAC		Irvine CA 92606	
STARTRAC PART NO	REV		
711-3192	E		
TITLE			
ASSY, STEP, BASE, DRIVE			
SCALE: 1:4	SHEET 2 OF 2	SHEET SIZE: C	